

# Canadian Hospitals Injury Reporting and Prevention Program (CHIRPP)

## A system to track injuries and poisonings in emergency departments

**1** A person with an injury or poisoning visits the hospital emergency department.



**Injury information is collected right at the hospital.**

Injuries cause many deaths and hospital visits in Canada.

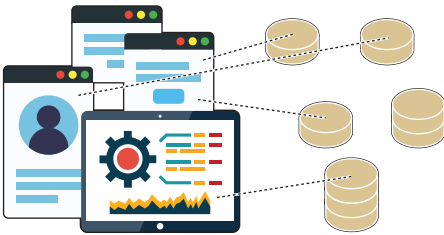
We can predict and prevent most injuries. CHIRPP plays an important role in helping to reduce the number and severity of injuries in Canada.

**2** Patients or caregivers answer questions about how the injury happened. Questions can be answered on paper, or by using an online, mobile-friendly form.



Hospital staff remove any information that could identify a patient. They then enter information about the injury and treatment into the secure, online eCHIRPP database.

**3** Public Health Agency of Canada staff sort and code the injury information.



**Injury data are analyzed and displayed in graphs and tables.**

**4** The data are analyzed to look for patterns of injury causes, risks and protective factors.



**5** The data are shared with the public, researchers, health professionals, and policy makers.

The injury statistics are published in scientific journals, reports...



...and are also available through infographics, websites, social media and news outlets.

**Information is shared, then used for evidence-based public health action.**

**This near real-time information allows for early detection of new hazards and emerging issues.**



**6** Accurate information leads to more effective actions to promote health and prevent injuries.



Information in eCHIRPP gives the solid evidence we need to understand how and why injuries happen, and how to prevent them.

For more information about CHIRPP visit:  
[www.canada.ca/en/public-health/services/injury-prevention/canadian-hospitals-injury-reporting-prevention-program.html](http://www.canada.ca/en/public-health/services/injury-prevention/canadian-hospitals-injury-reporting-prevention-program.html)