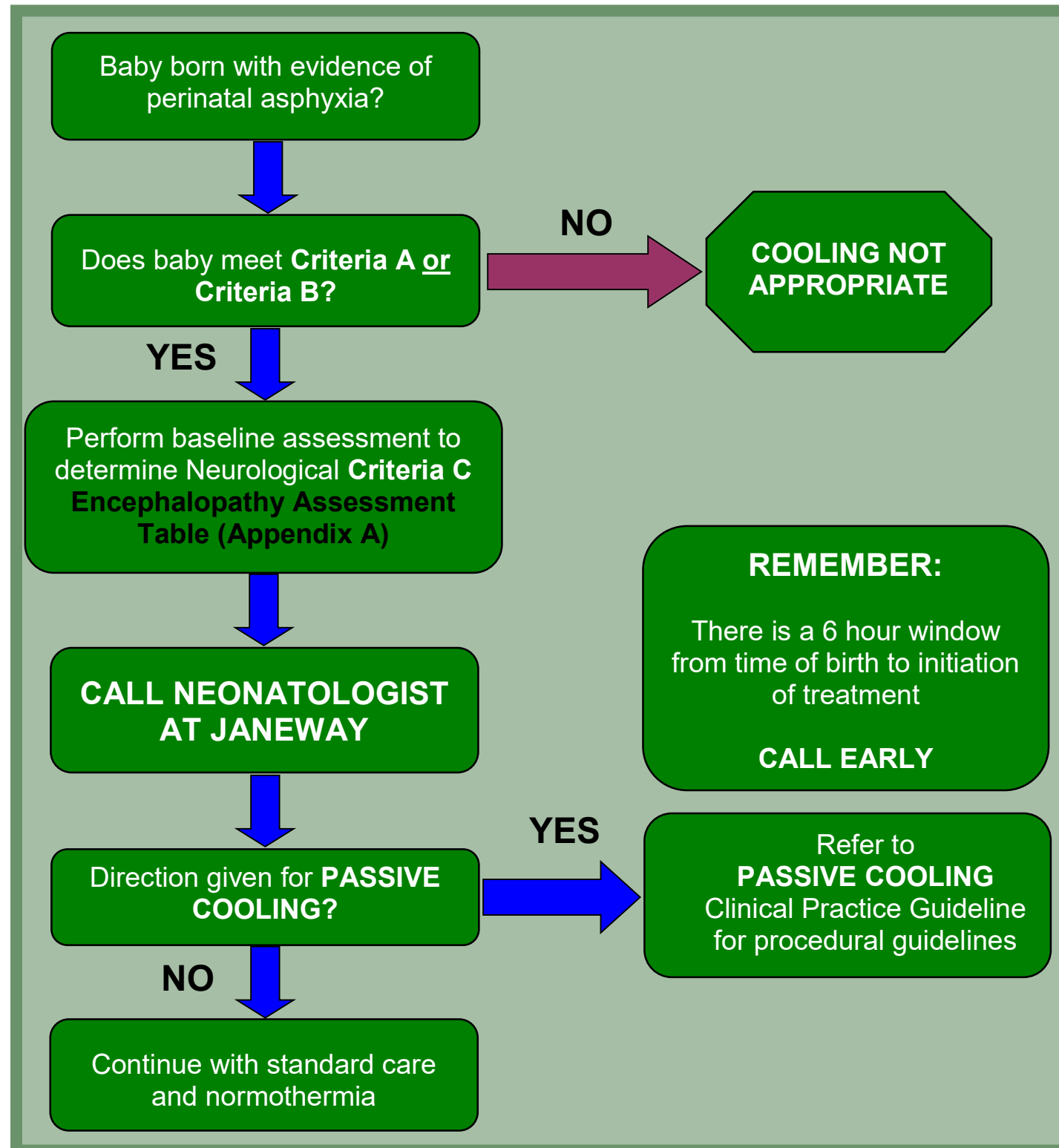


Eligibility for Newborn Passive Cooling

March 2022



TREATMENT CRITERIA A, B AND C

Infants' ≥ 35 completed weeks gestation AND less than 6 hours old meeting the following criteria:

Criteria A

Umbilical cord pH less than or equal to (\leq) 7.00 OR base deficit greater than or equal to (\geq) -16 **OR**

Criteria B

- Umbilical cord gas OR capillary, venous or arterial blood gas within 1 hour of birth with pH 7.01 to 7.15 OR base deficit -10 to -15.9 **AND**
 - A history of acute perinatal event **AND**
 - Apgar score of less than or equal to (\leq) 5 at 10 minutes or at least 10 minutes of positive pressure ventilation.

If Infant meets **Criteria A** or **Criteria B**:

- Perform a baseline neurological assessment to determine Criteria C.
- Call Neonatologist at Janeway

Criteria C:

Moderate to severe encephalopathy as defined by:

- Clinical seizures within 6 hours of birth **OR**
- At least one sign in three or more of the 'moderate' or 'severe' columns in the **Encephalopathy Assessment Table (APPENDIX A)**

Refer to:

Passive Cooling in Referring Centres for Babies at Risk for Hypoxic Ischemic Encephalopathy Clinical Practice Guideline